

## Switching, Sensing and Control Solutions

from GENTECH INTERNATIONAL LTD  
Grangestone Industrial Estate, Ayrshire KA26 9PS, United Kingdom  
Telephone: +44(0) 1465-713581 Fax: +44(0) 1465-714974  
Email:sales@gentech-international.co.uk  
Website: www.gentechinternational.com

# OS-10 SERIES



## Digital Optical Metallic Liquid Level Sensor

### DESIGN FEATURES

- Detects liquid present with contact
- Repeatable +/-1mm
- Software delay times available
- Max Temp Range -20 +125°C
- Max Pressure 5 bar
- Body Material - **Inox Steel AISI 303**
- Senses a variety of liquids
- No moving parts - electronics detection
- Mountable at any angles - top - side - tank fitting
- Long Life

### Electrical Specifications

SUPPLY VOLTAGE	OUTPUT TYPE	TEMPERATURE RANGE
DC 10-28 V	NPN 100mA PNP 100mA	-10 +105°C
DC 12 V	NPN 50mA PNP 50mA	-20 +125°C *
AC 10-28 V	TRIAC 200mA	-10 +85°C
Transistor	* -20 +125°C only available with Teflon Dome, 12VCD, 50mA max	
Electronic Protection	NPN 47KOhm Pull up or Open collection options Reverse Polarity, Short Circuit, Over Voltage	

### Environmental Specifications

MATERIALS	POLYSULFONE	TEFLON
DOME MATERIAL		
HOUSING BODY	Inox Steel AISI 303	Inox Steel AISI 303
OPERATING TEMP	-10 +105°C	-20 +125°C

Detailed chemical resistance information for specific liquids is available on request.

### Typical Applications

- Petrochemicals
- Processing & Packaging Equipment
- Heavy Duty automotive
- Leak Detection
- Hydraulic Reservoirs
- Machine Tools
- Various types of Compressors
- Pumps
- HVAC & R Applications
- Motors, Gearboxes & Gearmot
- Truck-cranes

### Mechanical Specifications

MOUNTING THREAD	MOUNTING POSITION	PRESSURE
3/8" GAS	AT ANY ANGLE	5 BAR MAX
1/2" GAS	(Not Suitable for Bottom Fitting)	
1/2" NPT	Requires 55mm distance to operate	

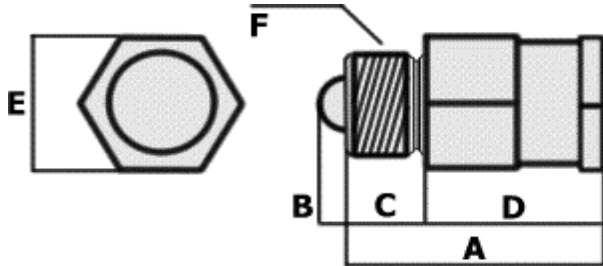
### Output Setup

OUTPUT MODE
Normally Open (NO) sensors output is open in air and closed in presence of liquids
Normally Closed (NC) sensors output is closed in air and open in presence of liquids

### Electrical Connections

STANDARD	3 Wires Cable fitted with 2 metre of cable
OPTION (a)	Cable length up to 10 metres in steps of 50cm
OPTION (b)	AMP Connector

**DIMENSIONS**



O-ring VITON 2068



+

3/8" GAS Thread



Bonded Seal



+

1/2" GAS Thread



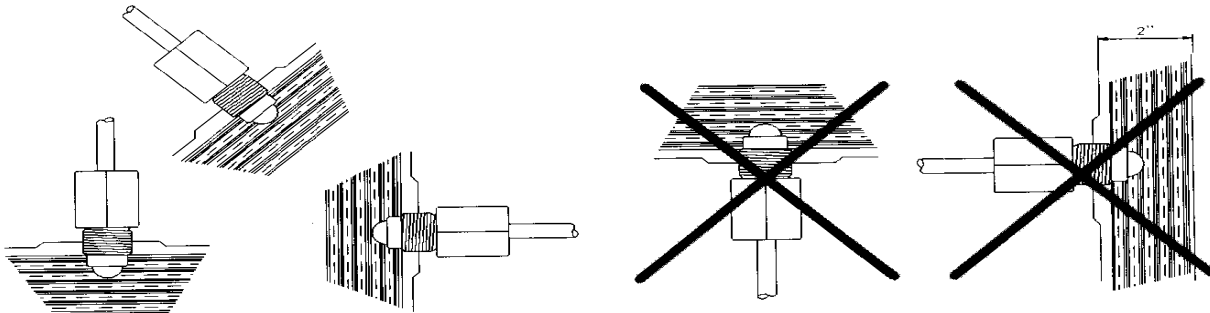
1/2" Npt Thread



**TORQUE TIGHTEN - Maximum 40 Ntm**

	mm	inch		mm	inch
<b>A</b>	50,00	1,97	<b>D</b>	34,50	1,36
<b>B</b>	5,20	0,20	<b>E</b>	27,00	1,06
<b>C</b>	15,50	0,61	<b>F</b>	3/8"Gas, 1/2"Gas, 1/2"Npt	

**MOUNTING POSITIONS**



**NOTE**

**Do not install sensor close to infrared sources.**

**The Dome of the sensor must be at least 55mm (2") from any reflective surfaces.**

**Do not use to detect frozen liquids.**

**Installation & Applications**

Please contact our Technical Sales Team for Installation details or assistance related to the application of this sensor



GENTECH INTERNATIONAL LTD  
 Grangestone Industrial Estate, Girvan, Ayrshire KA26 9PS, United Kingdom  
 Telephone: +44 (0) 1465-713581 Fax: +44 (0) 1465-714974  
 Email: sales@gentech-international.co.uk  
 Website: www.gentechinternational.com